

ART.2277



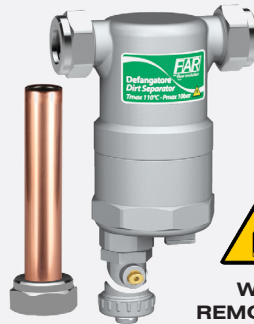
WITH
REMOVABLE
MAGNETIC
INSERT

compactFAR

Ultra compact dirt separator for heating plant, provided with magnet for the removal of ferrous particle.

- Pipe connection: 3/4" F - M
- Chromed finish
- Removable cartridge and magnets
- On/off Ball valve
- Drain cock
- Ø18mm copper pipe with 3/4" connection
- 3/4" chrome-plated nut
- Patent pending

ART.2278



WITH
REMOVABLE
MAGNETIC
INSERT

compactFAR

Ultra compact dirt separator for heating plant, provided with magnet for the removal of ferrous particle.

- Pipe connection: 3/4" F - F
- Chromed finish
- Removable cartridge and magnets
- Drain cock
- Ø18mm copper pipe with 3/4" connection
- Patent pending

ART.2279



WITH
REMOVABLE
MAGNETIC
INSERT

compactFAR

Ultra compact dirt separator for heating plant, provided with magnet for the removal of ferrous particle.

- Pipe connection : 3/4" F - F
- White/Chromed finish
- Removable cartridge and magnets
- Drain cock
- Ø18mm copper pipe with 3/4" connection
- Patent pending

1 DESCRIPTION

The CompactFar dirt separator is a device designed for the installation on domestic boilers.

It is equipped with a filter cartridge that allows to separate from water all the impurities circulating in the heating system pipes, that could damage the boiler or create malfunction failures.

A magnetic insert is fitted in the bottom part of the dirt separator and this makes the CompactFar ideal for the installation on systems with a high quantity of ferrous particles, metal shavings or rust due to corrosion.

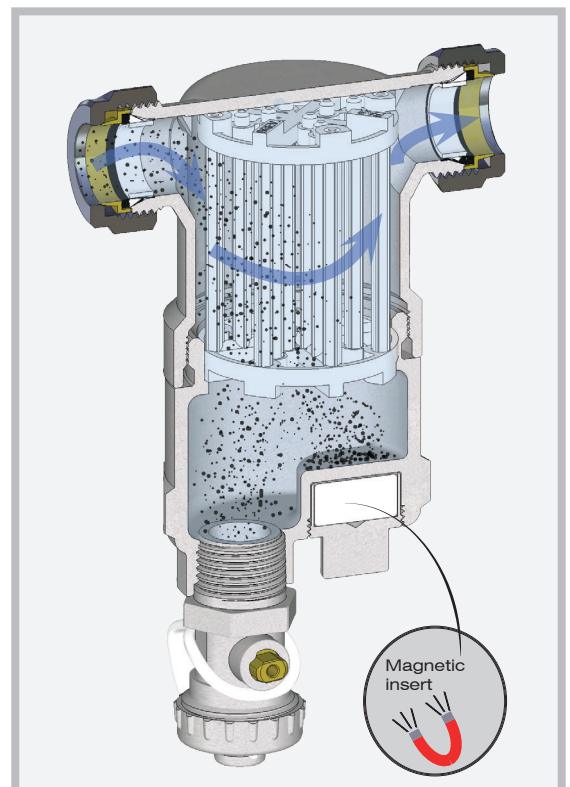
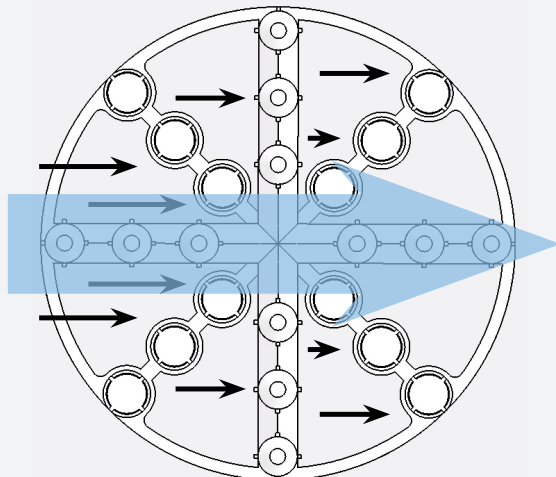
The dirt sediments are falling on the bottom of the chamber and they can be flushed down through a drainage valve.

2 WORKING PRINCIPLE AND DETAILS

As illustrated, the use of vertical bars aligned to the direction of the fluid maximizes the surface area for contact with particles of dirt suspended in the fluid, while tongues create turbulence to slow the flow rate and facilitate the separation and settling of impurities.

The dirt separator with magnetic inserts allows to catch iron particles in older systems or in systems with high dirt concentration.

Cartridge section which shows the water flow (blue arrow) and the impurities movement (black arrows).



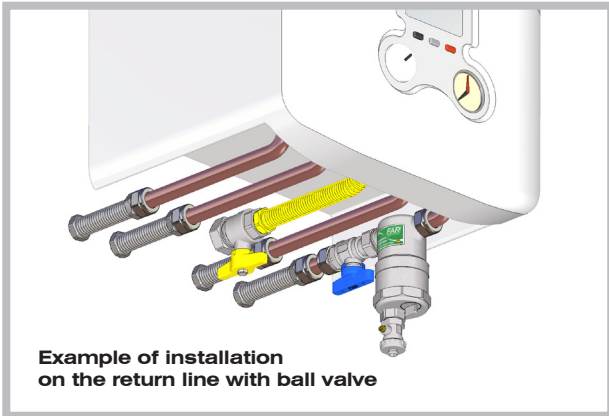
3 INSTALLATION



ATTENTION: Because of the magnetic inserts, anybody fitted with a pacemaker is advised to maintain a safe distance during operation and maintenance. Attention should be paid to the use of electronic equipment near magnetic inserts to avoid interference.

The dirt separator should be placed on the return line before the boiler, in such way as to catch all the impurities that might damage the boiler or the circulator.

ATTENTION: For proper operation the dirt separator should always be installed in a vertical position.



Example of installation on the return line with ball valve

The dirt separator connection can be changed from flat face to Eurokonus, by keeping or removing the white plastic ring.

EUROKONUS CONNECTION

In order to get the eurokonus connection, remove the white plastic insert.



FLAT FACE CONNECTION

In order to get the flat face connection, place the white plastic insert.



3/4" eurokonus connection

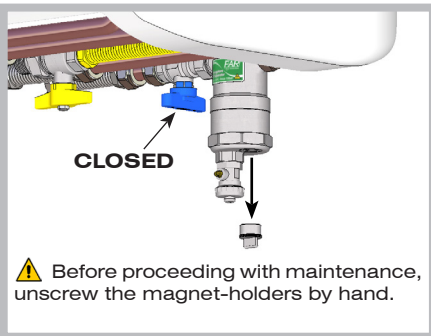


3/4" flat face connection

4 MAINTENANCE

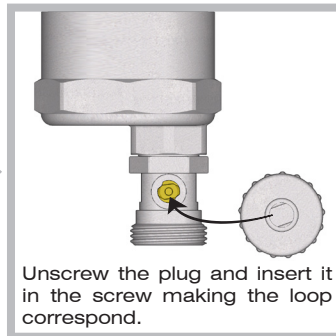
Ordinary maintenance

The dirt separator requires periodical maintenance, to remove the deposit impurities.

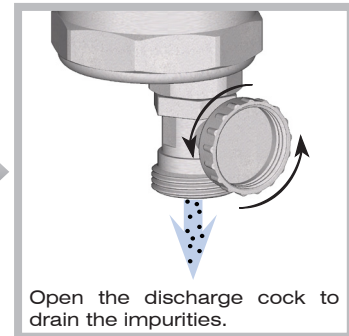


CLOSED

ATTENTION: Before proceeding with maintenance, unscrew the magnet-holders by hand.



Unscrew the plug and insert it in the screw making the loop correspond.

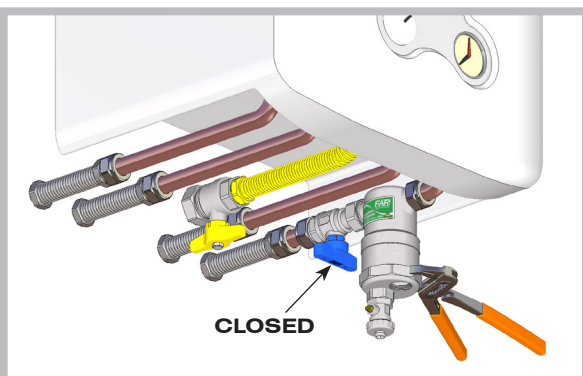


Open the discharge cock to drain the impurities.

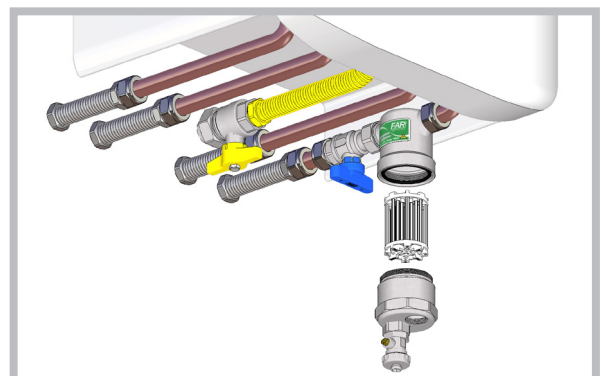
Extraordinary maintenance

ATTENTION: Before proceeding with maintenance, unscrew the magnet-holders by hand.

Beyond the normal drain procedure, it is possible using a pipe wrench (Plumbing wrench/adjustable wrench) to unscrew the down part of the separator and take the cartridge out to be cleaned from impurities and dirt waste.



CLOSED



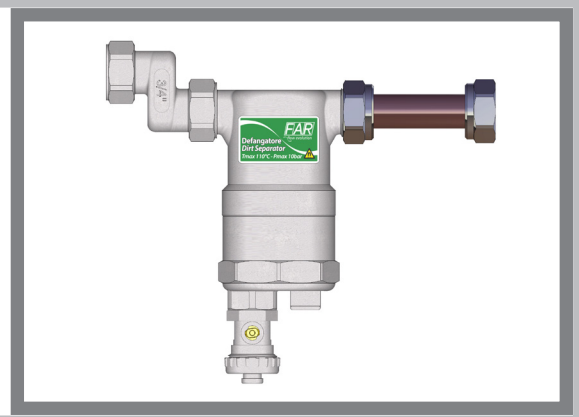
5 ACCESSORIES

To manage different types of installation, FAR produces a variety of accessories, directly applicable on both connections of the Compactfar dirt separator that makes this product compatible with any connection.

Art.5565 234



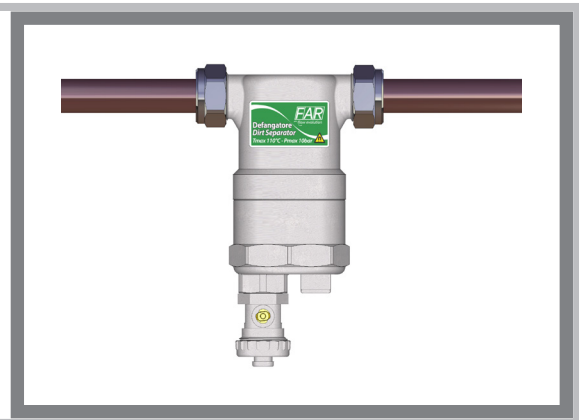
In the case of misalignment between connections and hoses, the eccentric fitting F-F **art.5565 234**, brass made, 20mm wheelbase allows to recover this gap for the connection between dirt separator and pipes.



Art.8421 18



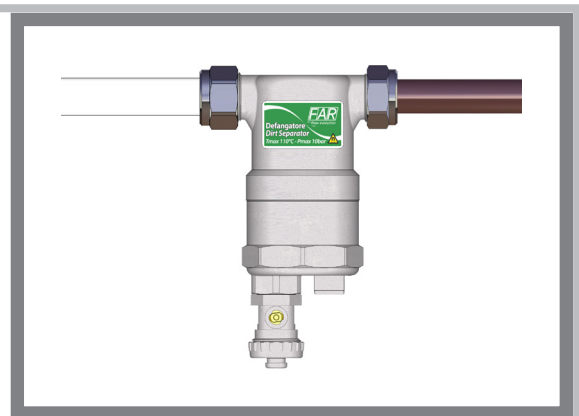
Adapter for Ø 18mm copper pipe **art.8421 18**, made in chrome-plated brass and equipped with rubber washer to directly connect the dirt separator with the copper pipe.



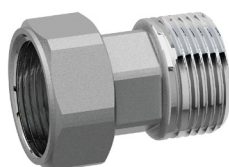
Art.6076



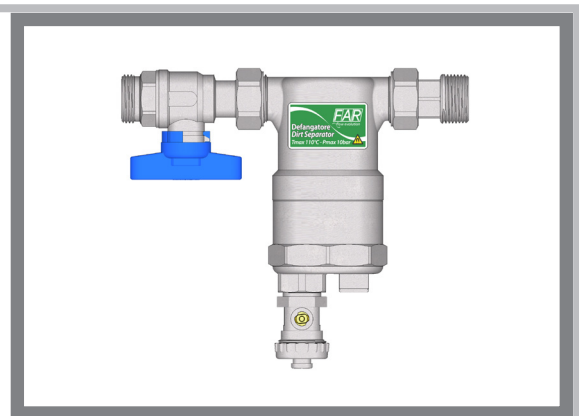
Adapter for multilayer pipes complete with chrome-plated nut. Suitable for all our products with EUROKONUS connection.

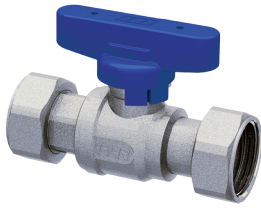
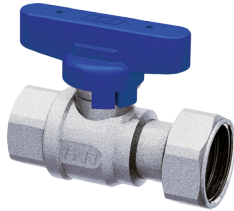


Art.8323 34

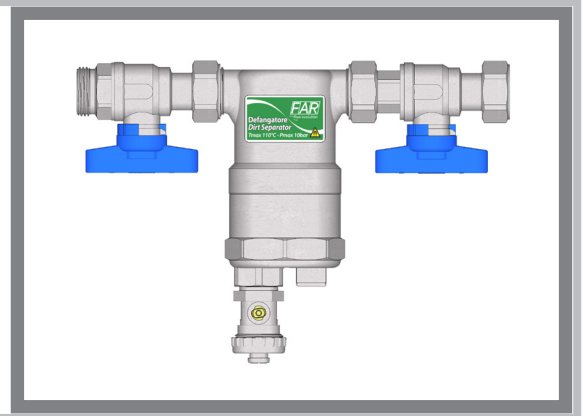
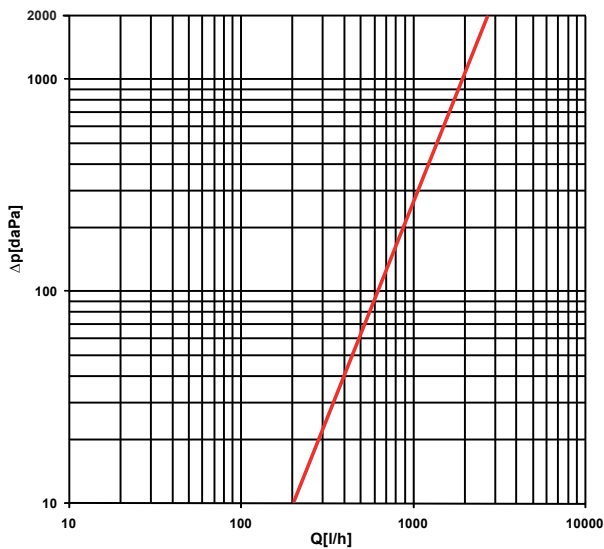


The M-F 3/4" junction connection, chrome-plated brass provided with removable cap **art.8323 34** allows the connection with the 3/4" F connection directly at the exit of the return line.

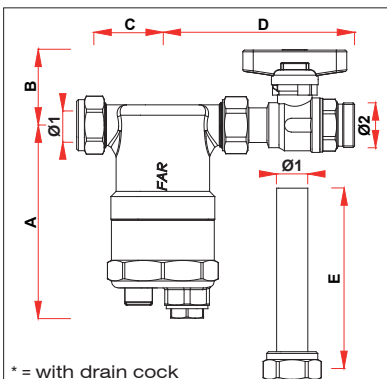


Art.3037C

Art.3047C


The valve **art.3037C** F-F equipped with double swiveling nut and the valve **art.3047C** equipped with single swiveling nut, work as shut-off valves the dirt separator and the boiler with 3/4" M connection.

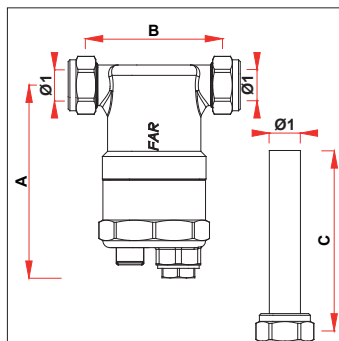

6 FLUID DYNAMIC FEATURES

Kv=5,86 m3/h
7 TECHNICAL SPECIFICATIONS

- Body: Brass CB753S
- Drain cock: Brass CW617N
- Max. working temperature: 110°C
- Nominal pressure: 10 bar
- Filtration cartridge: PA6
- O-Ring: EPDM
- Max. flow speed: 1.4 m/s

B DIMENSIONAL FEATURES


* = with drain cock

CODE	Ø1	Ø2	A	B	C	D	E
2277 34	Ø18	G3/4	112 (143*)	44	41	111	103



* = with drain cock

CODE	Ø1	A	B	C
2278 34	Ø18	112 (143*)	82	103
2279 34	Ø18	112 (143*)	82	103